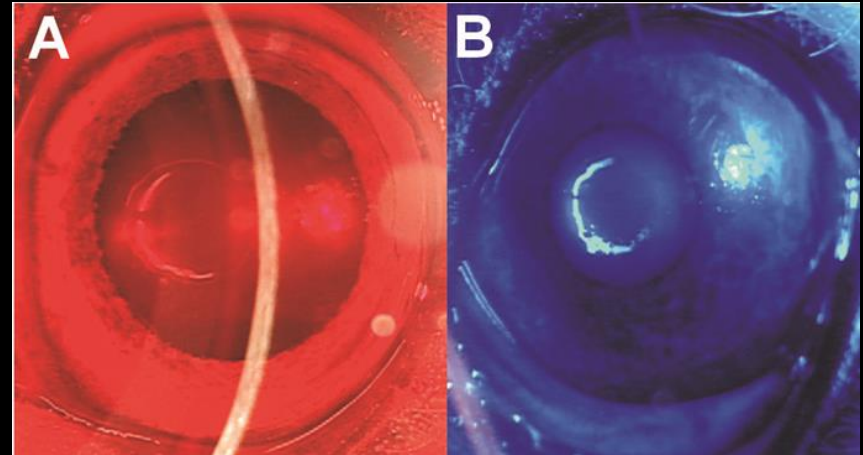


Retinal screening study

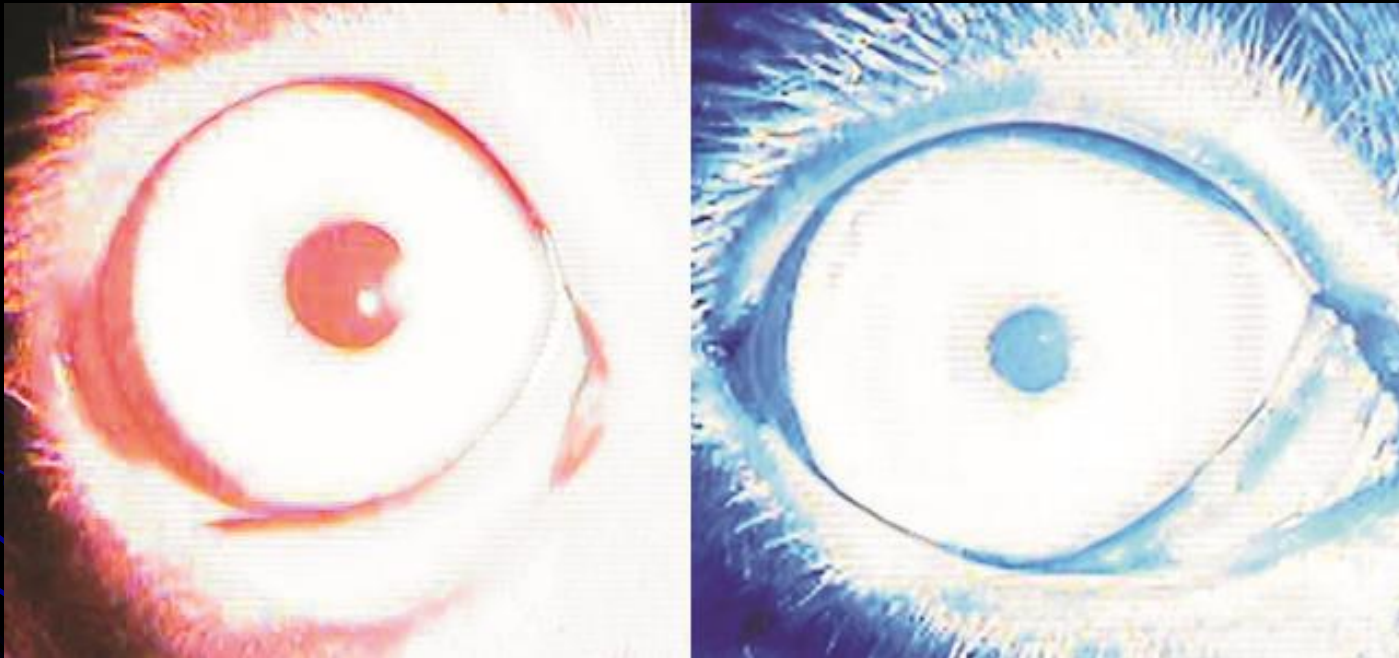
- Evaluate 300 canine and feline patients in your practice over the course of 6 months
- Record chromatic pupil light reflex abnormalities



vision
biomedical
solutions

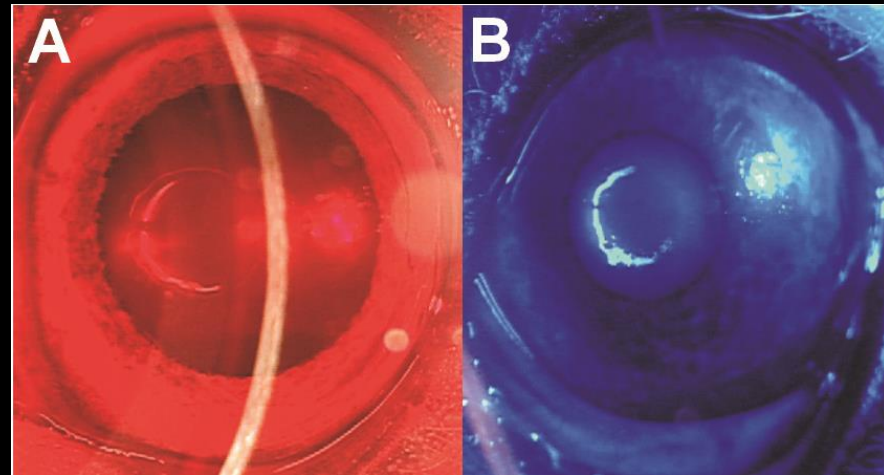
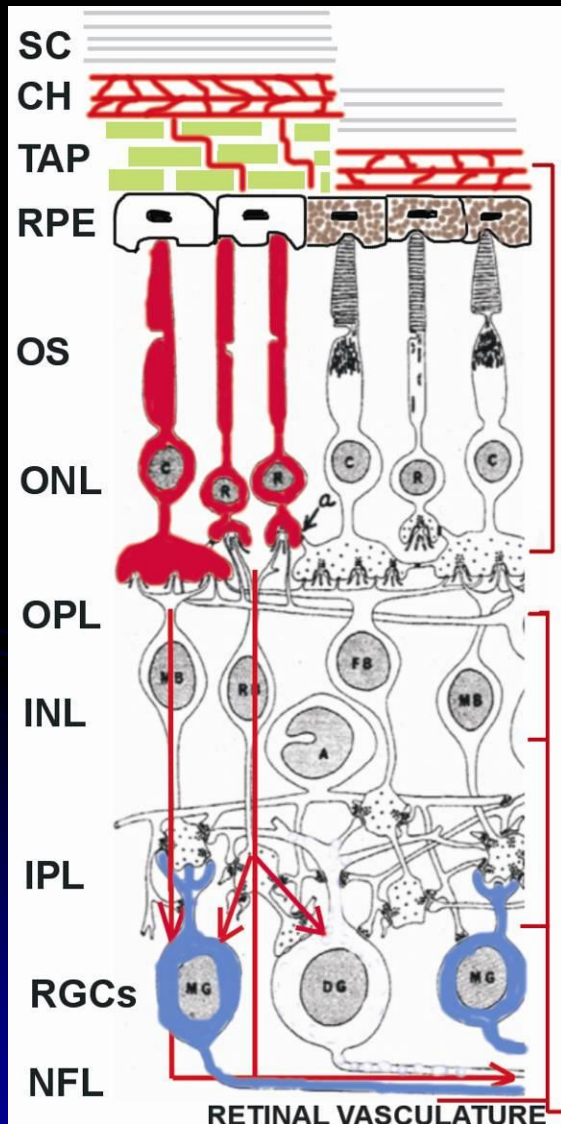


Chromatic pupil light reflex testing – rapid screening technique for evaluation of the retinal function

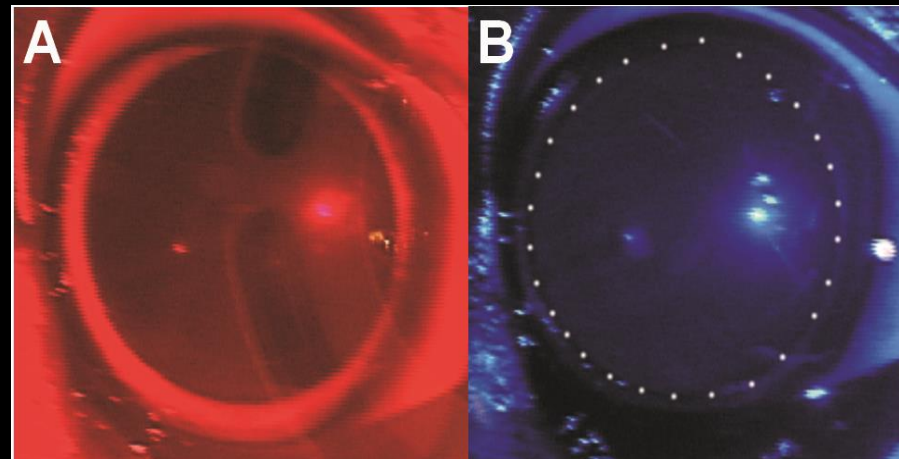


**BRISK AND COMPLETE RED AND BLUE PUPIL LIGHT REFLEX RESPONSES
IN HEALTHY CANINE PATIENT**

Chromatic pupil light reflex - differentiation between retina and optic nerve diseases



Retina disease



Optic nerve disease

Patient population to be screened

- Healthy dogs
- Dogs with history of vision problems
- Dogs with history of systemic diseases
Dogs with Cushing's disease (or PU/PD)
- Dogs with allergies
- Dogs with history of cancer or neuro diseases
- Healthy cats
- Cats with history of vision problems
- Cats with history of systemic hypertension, chronic renal disease or neurological disease
- Cats with history of cancer

Information needed

- Species, breed, sex, age, name of hospital, hospital record number
- History of diseases (can fax results or just fill in info in an Excel sheet)
- Current heartworm medications (if any)
- Pupil diameter information: resting diameter in dim light (usually 10 mm), end-constriction diameter (usually 4-5mm in healthy eyes) after illumination
- Any history of vision problems

Example

- Beagle mix, 6y, SF, Happy Hospital CR, MR# 2356
- Seasonal skin allergies
- Heartguard
- Pupil red: 10-4 mm
- Pupil blue: 10-3 mm
- No problems with vision

Visit our retinal screening study webpage for testing protocols and movies

Search results - sgrozdan... Search results - Google... Blic Online | Najtiražnije... FitBark... Home... Sinisa

Not secure | animal-eye-iowa.com

Doctors & Staff
Medical Services
Surgical Services
Office Hours
Locations & Directions
Traveling Arrangements
Contact Us
FAQ

QUICK REFERENCE
Canine Diseases
Feline Diseases
Equine Diseases
SARDs and IMR
First Time Visit
Medication Guide
Surgery Guide
Forms & Downloads
For Referring Veterinarians


Retina Screening Study

Retina Screening Excel Sheet

Pathology Services

Expert Users can Login
Login
Password
[Forgot Password?](#) [Login](#)

ANIMAL EYE CLINIC
698 Boyson Road, Hiawatha, IA 52233
Phone: 319-826-6217
Phone: 1-860-IOWA-EYE (4692-393)
Fax: 1-877-516-6277



HOURS
Monday, Tuesday & Thursday 9am-5pm
Wednesday 9am-7pm
Saturday 9am-12pm

Animal Eye Consultants of Iowa See The World

2 LOCATIONS IN IOWA
1 LOCATION IN NORTH DAKOTA

CONTACT US

319-826-6217
1-860-IOWA-EYE (4692-393)
FAX: 1-877-516-6277

EMAIL US

MAKE APPOINTMENT


Sinisa Grozdanic
D.V.M., Ph.D., Dipl ACVO
Staff Ophthalmologist

2017 Calendar Schedule
Veterinarians - Patient Referral
Clients - Need Referral

ANIMAL EYE CONSULTANTS OF IOWA OPENS OPHTHALMOLOGY SPECIALTY CLINIC
POSTED ON July 22, 2015

... first ophthalmology specialty clinic in Iowa, which will serve patients all days of week..

[Read More](#)



ARTICLES:

New Treatment For Glaucoma Shows Promise In Laboratory, Say Researchers
ScienceDaily - August 2, 2007
(Read)

ABOUT US
Doctors & Staff
Medical Services

QUICK REFERENCE
Canine Diseases
Feline Diseases

CONTACT US
animaleyeiowa@gmail.com
Fax: 1-877-516-6277

LOCATION

1:27 PM 5/3/2017


Retina screening study

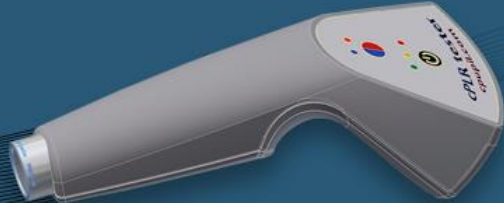
What is cPLR Tester? x how to print screen on w x

animal-eye-iowa.com/cplr/

Apps Contacts | R&D Group The registration proce Youth HotSpots Germ Mobile WiFi edeka-mobil.de SunStim 8-1053-60 Pe Used Laser Zeiss Visu Other bookmarks

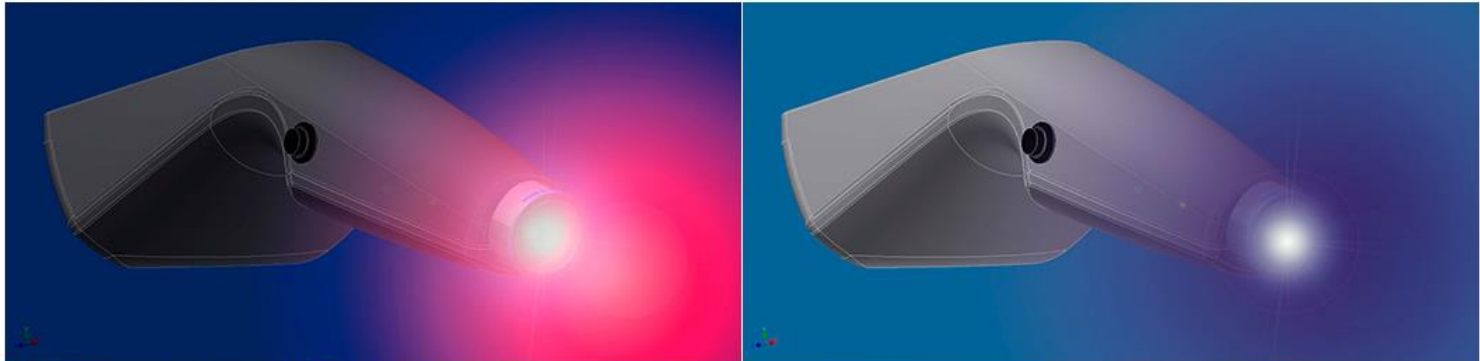
What is cPLR Tester? Clinical Applications + cPLR Physiology + cPLR Tester in your Clinic Instructions for Use Purchase cPLR

 ANIMAL EYE CONSULTANTS OF IOWA
SEE THE WORLD



What is cPLR Tester?

cPLR Tester is a unique diagnostic instrument for rapid screening of retina and optic nerve function using evaluation of the pupil light reflex after chromatic stimulation of rods, cones and melanopsin containing retinal ganglion cells (intrinsically photosensitive retinal ganglion cells – ipRGCs) with a red and blue light.



10:50 PM
4/29/2017

Download Excel file and send us your patient data

Search results - sgrozdani X Search results - Google E X Blic Online | Najtiražnije X FitBark X Home X Sinisa

← → ↻ ↗ ⓘ Not secure | animal-eye-iowa.com

Doctors & Staff
Medical Services
Surgical Services
Office Hours
Locations & Directions
Traveling Arrangements
Contact Us
FAQ

QUICK REFERENCE
Canine Diseases
Feline Diseases
Equine Diseases
SARDs and IMR
First Time Visit
Medication Guide
Surgery Guide
Forms & Downloads
For Referring Veterinarians


Retina Screening Study

Retina Screening Excel Sheet

Pathology Services

Veterinarians can Login
Login
Password
[Forgot Password?](#) [Login](#)

ANIMAL EYE CLINIC
698 Boyson Road, Hiawatha, IA 52233
Phone: 319-826-6217
Phone: 1-860-IOWA-EYE (4692-393)
Fax: 1-877-516-6277



HOURS
Monday, Tuesday & Thursday 9am-5pm
Wednesday 9am-7pm
Saturday 9am-12pm

Animal Eye Consultants of Iowa See The World

2 LOCATIONS IN IOWA
1 LOCATION IN NORTH DAKOTA

CONTACT US

319-826-6217
1-860-IOWA-EYE (4692-393)
FAX: 1-877-516-6277

EMAIL US

MAKE APPOINTMENT


Sinisa Grozdanic
D.V.M., Ph.D., Dipl ACVO
Staff Ophthalmologist

2017 Calendar Schedule
Veterinarians - Patient Referral
Clients - Need Referral

ANIMAL EYE CONSULTANTS OF IOWA OPENS OPHTHALMOLOGY SPECIALTY CLINIC
POSTED ON July 22, 2015

... first ophthalmology specialty clinic in Iowa, which will serve patients all days of week..

[Read More](#)



ARTICLES:

New Treatment For Glaucoma Shows Promise In Laboratory, Say Researchers
ScienceDaily - August 2, 2007
(Read)

ABOUT US
Doctors & Staff
Medical Services

QUICK REFERENCE
Canine Diseases
Feline Diseases

CONTACT US
animaleyeiowa@gmail.com
Fax: 1-877-516-6277

LOCATION

1:27 PM 5/3/2017

Thank you!

Dr Grozdanic contact info:
animaleyeiowa@gmail.com

Phone: 1-860-IOWA-EYE



animal-eye-iowa.com